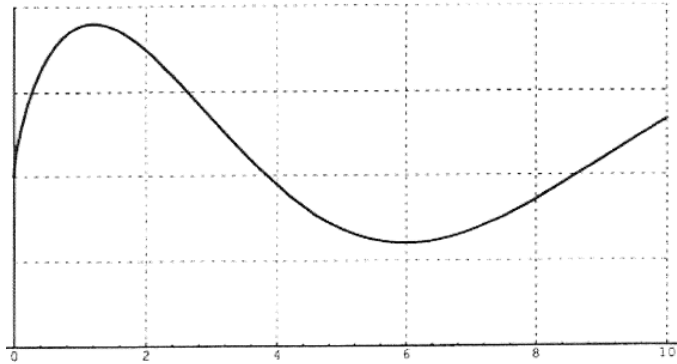


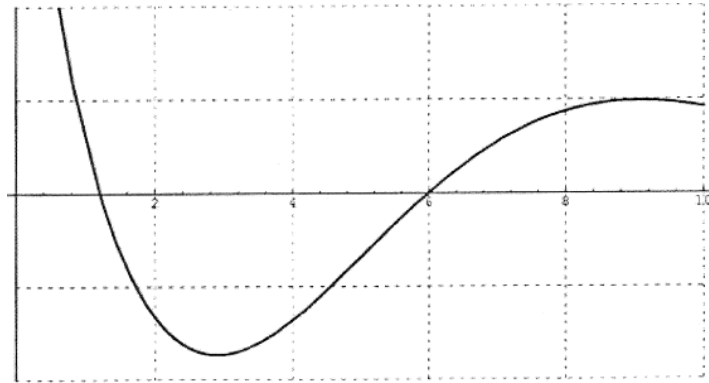
Graphical Interpretations

1. Given the following graph of $f(x)$, answer the following questions:



- Where is f increasing? Where is f decreasing?
- Where does f have a local max? Local min?
- Where does f have points of inflection?
- Where is f concave up? Where is f concave down?

2. Given the following graph of $f'(x)$, answer the following questions:



- Where is f increasing? Where is f decreasing?
- Where does f have a local max? Local min?
- Where does f have inflection points?
- Where is f concave up? Concave down?